



SAN RAFAEL TRANSPORTATION CENTER

Relocation Analysis, Environmental Clearance, and Preliminary Design



TRANSIT CENTER ALTERNATIVES

Project Information

The Golden Gate Bridge, Highway and Transportation District, in coordination with the City of San Rafael, Marin County Transit, Transportation Authority of Marin (TAM), and Sonoma-Marín Area Rail Transit (SMART), is working on a replacement San Rafael Transportation Center (SRTC). This project includes identification and evaluation of potential sites, an environmental clearance process, and preliminary design for the transit center.

Stay Connected

Email: SRTC@goldengate.org

Telephone: (415) 257-4444

Updates available on the project website goldengate.org/SRTC

facebook.com/GoldenGateTransit

@GoldenGateBus



WE ARE LOOKING FOR YOUR FEEDBACK ON THESE ALTERNATIVES!

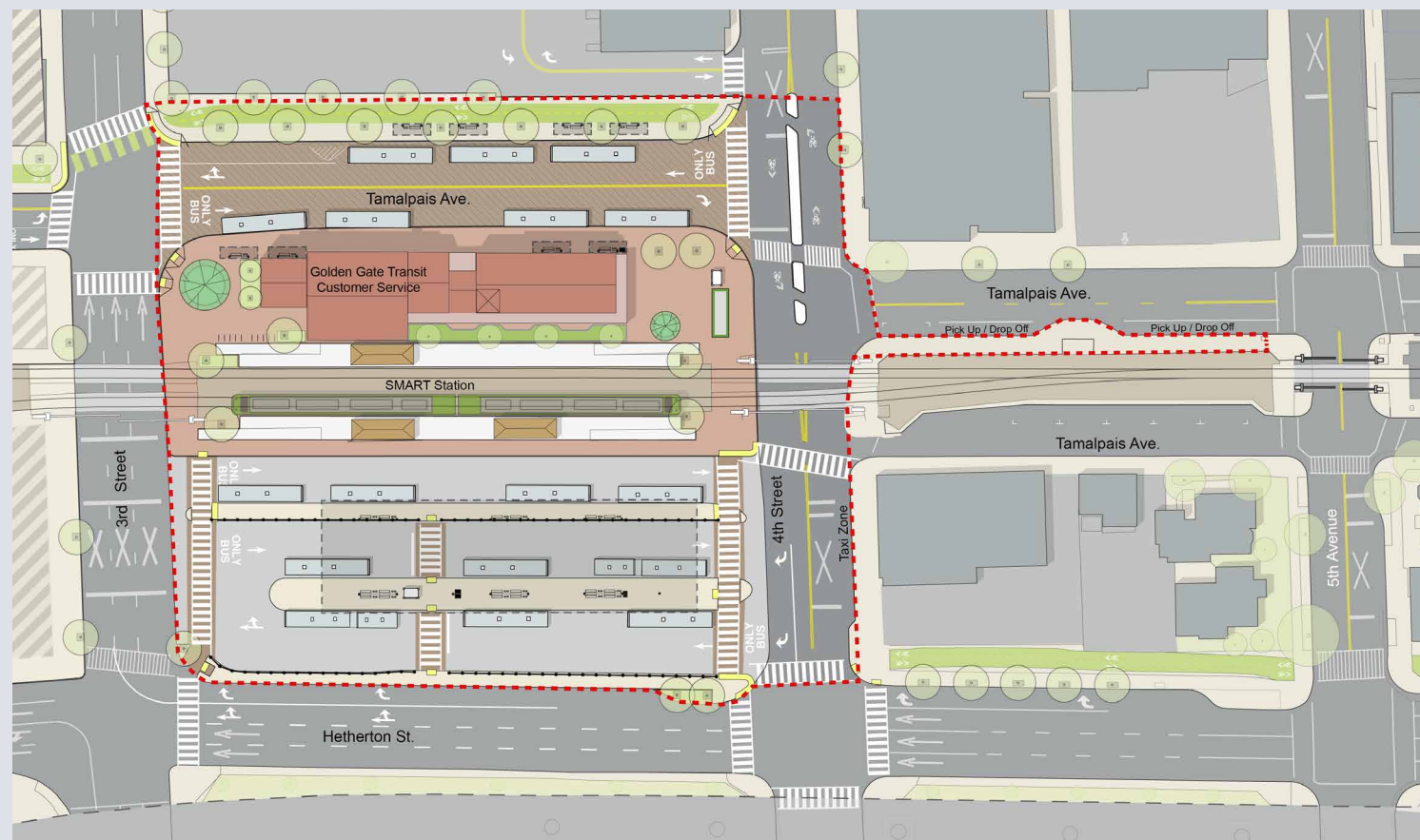
Please take our survey at: bit.ly/SRTC_Survey



Alternative Locations

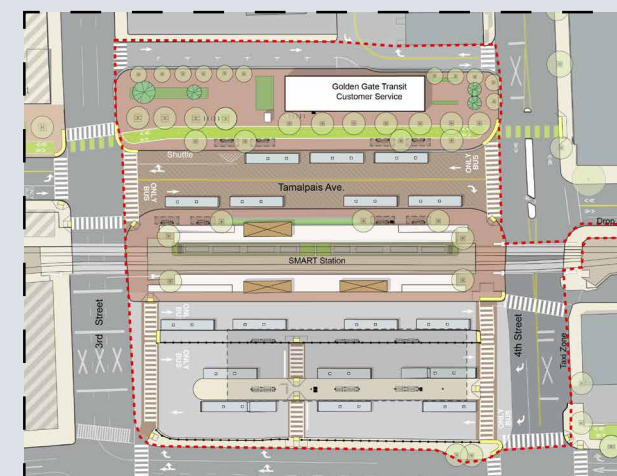


Whistlestop Block Alternative



Plan View

Move Whistlestop Variation



Plan View



3rd Street & Hetherton Ave, looking northwest

Benefits

- » Concentrates transit center activity on one block
- » Reduces bus travel times (5%-15% in downtown area) and improves reliability relative to current transit center
- » Moderate (<10%) reduction in traffic delay
- » Passengers don't have to cross streets to make any transfers
- » Opportunity to leverage existing/rebuilt Whistlestop as part of transit function

Drawbacks

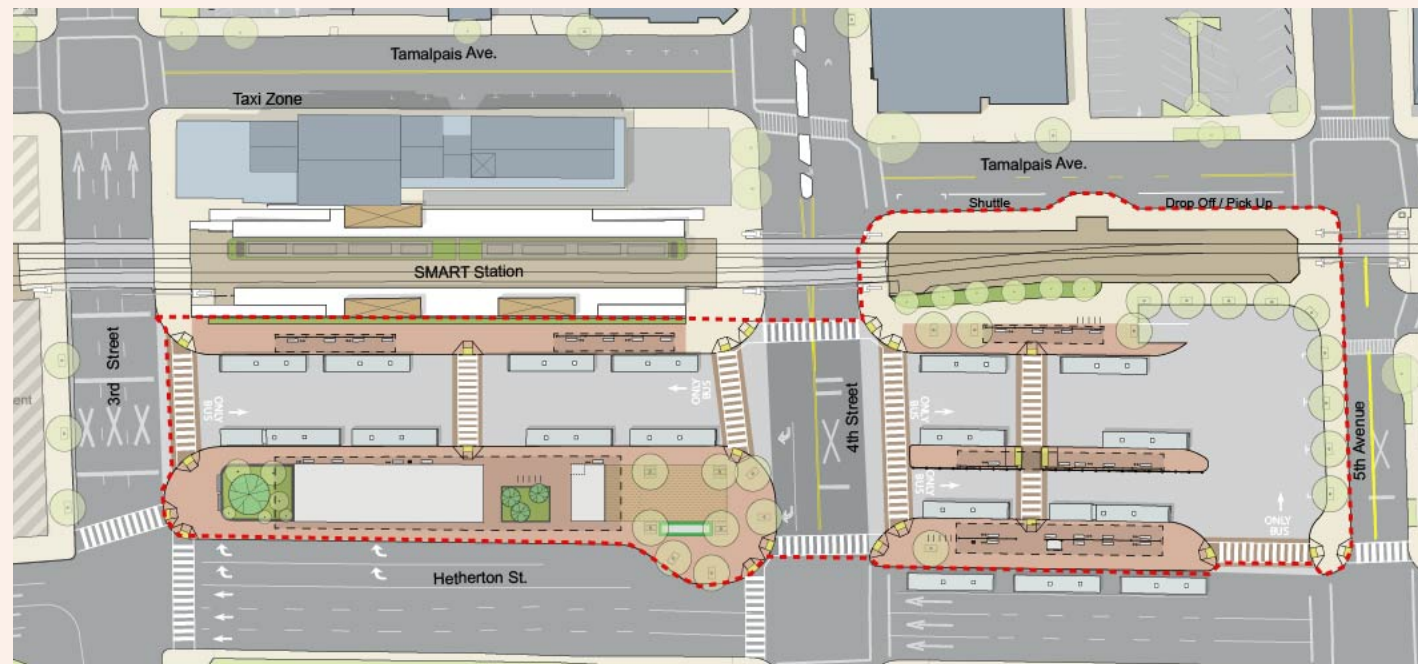
- » Uses land that could be envisioned for other purposes
- » Bus driveways on 4th Street between SMART and Hetherton



4th Street & Tamalpais Avenue, looking south

TRANSIT CENTER ALTERNATIVES

4th Street Gateway Alternative



Plan View

Benefits

- » Slightly reduces bus travel times relative to current transit center
- » Convenient transfers to/from SMART

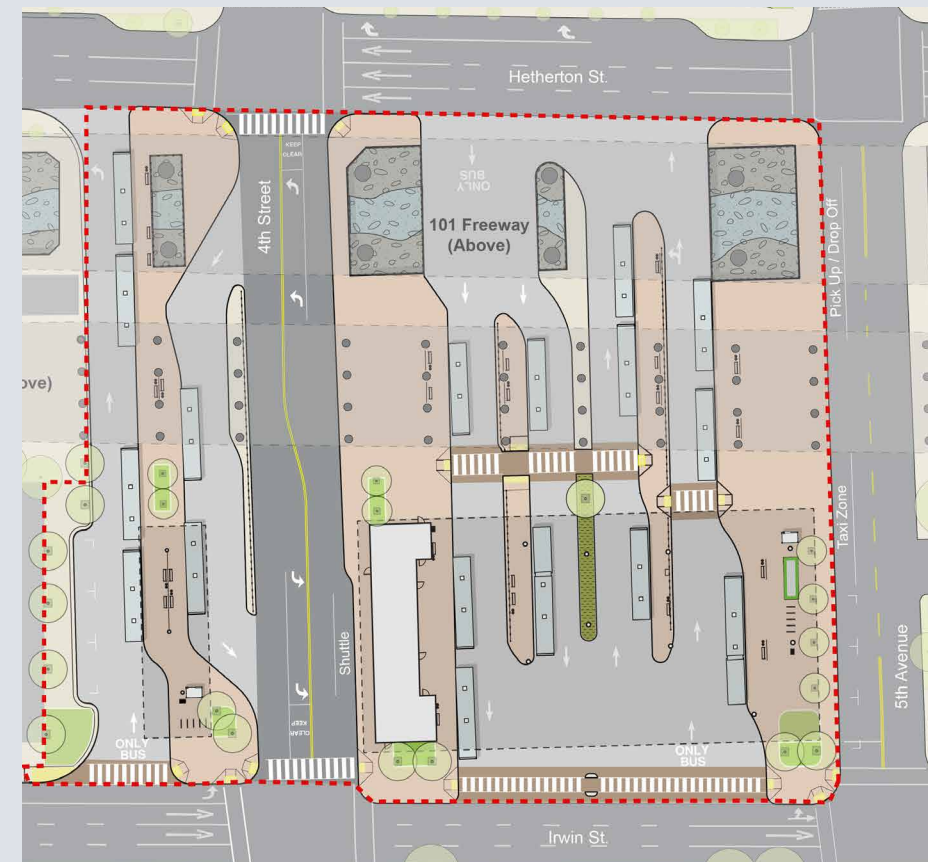


4th Street & Hetherton Street, looking west

Drawbacks

- » Closes right turns from Hetherton to 4th Street
- » Passengers have to cross 4th Street to make some transfers
- » Victorian-style houses fronting 5th Avenue would need to be relocated
- » Utilizes city blocks otherwise envisioned for other uses
- » Several bus driveways on 4th Street

Under the Freeway Alternative



Plan View



Bus bays under the freeway, looking east



5th Avenue & Irwin Street, looking northwest

Benefits

- » Utilizes otherwise less-developable land
- » Moderate (<10%) reduction in traffic delay
- » Reduces bus travel times (5%-15% in downtown area) and improves reliability relative to current transit center
- » Closer to San Rafael High School

Drawbacks

- » Passengers have to cross Hetherton to transfer to SMART
- » Passengers have to cross 4th Street to transfer between routes
- » Freeway columns limit line of sight and visibility
- » Less connected to downtown
- » No site control, Caltrans can rescind access to site (i.e repairs to freeway)
- » Impacts existing public park-and-ride
- » Impacts to Erwin Creek require mitigation