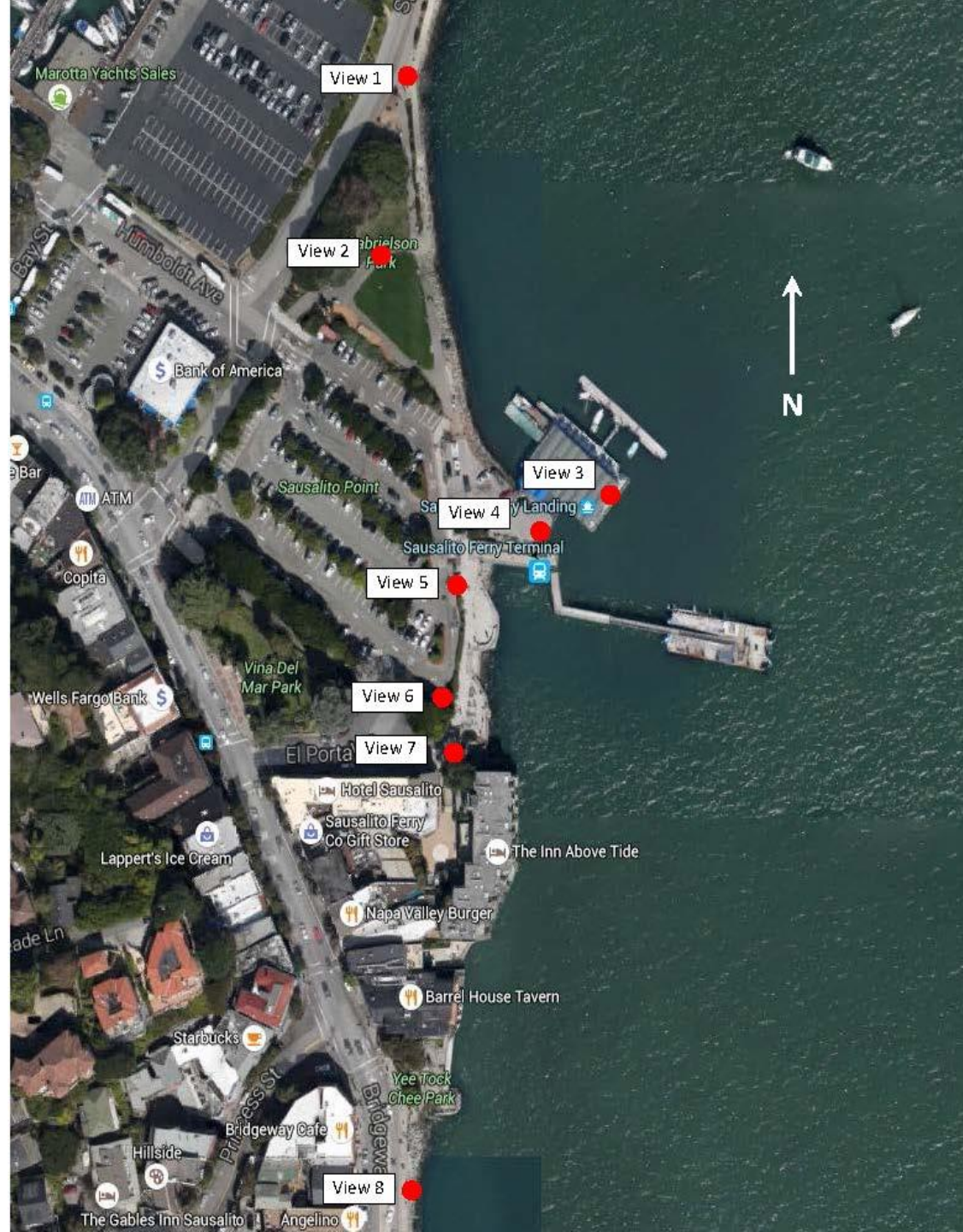


GUIDE TO RENDERINGS

VIEW POINTS
REQUESTED BY
COMMUNITY



VIEW 1 – EXISTING – EDGE OF GABRIELSON PARK

HIGH TIDE \approx 6.0'



VIEW 1 – PROPOSED – EDGE OF GABRIELSON PARK

AUGUST 2017 UPDATED MODEL – HIGH TIDE \approx 6.0'



VIEW 2 – EXISTING AND PROPOSED – GABRIELSON PARK (NO CHANGE TO VIEW)



VIEW 3 – EXISTING – YACHT CLUB

HIGH TIDE \approx 6.0'



VIEW 3 – PROPOSED – YACHT CLUB

AUGUST 2017 UPDATED MODEL – HIGH TIDE \approx 6.0'



VIEW 3 – EXISTING – YACHT CLUB

LOW TIDE \approx -0.8'



VIEW 3 – PROPOSED – YACHT CLUB

AUGUST 2017 UPDATED MODEL – LOW TIDE \approx -0.8'



VIEW 4 – EXISTING – YACHT CLUB PARKING LOT



VIEW 4 – PROPOSED – WITH BELVEDERES – YACHT CLUB PARKING LOT
AUGUST 2017 UPDATED MODEL



VIEW 4 – EXISTING – YACHT CLUB PARKING LOT



VIEW 4 – PROPOSED – WITHOUT BELVEDERES – YACHT CLUB PARKING LOT
AUGUST 2017 UPDATED MODEL



VIEW 5 – EXISTING – NORTH END OF PLAZA

HIGH TIDE ≈ 6.0'



VIEW 5 – PROPOSED – WITH BELVEDERES – NORTH END OF PLAZA

AUGUST 2017 UPDATED MODEL – HIGH TIDE ≈ 6.0'



VIEW 5 – EXISTING – NORTH END OF PLAZA

HIGH TIDE ≈ 6.0'



VIEW 5 – PROPOSED – WITHOUT BELVEDERES – NORTH END OF PLAZA

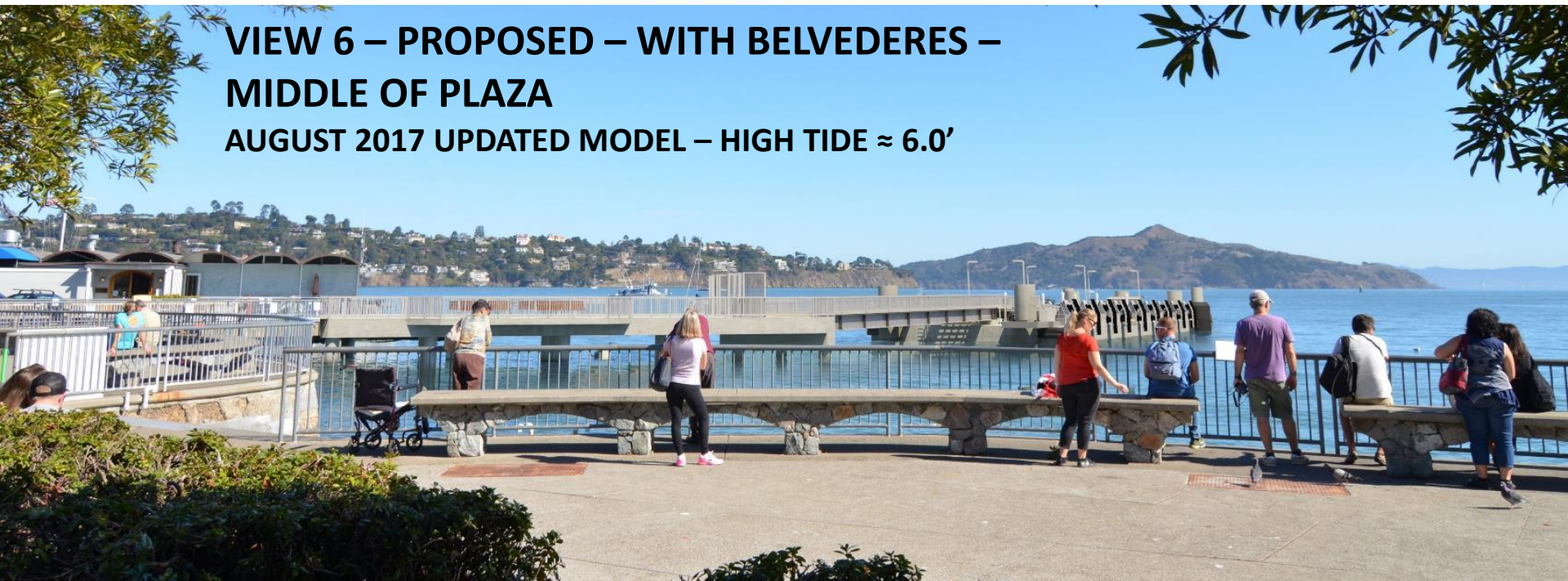
AUGUST 2017 UPDATED MODEL – HIGH TIDE ≈ 6.0'



VIEW 6 – EXISTING – MIDDLE OF PLAZA
HIGH TIDE ≈ 6.0'



VIEW 6 – PROPOSED – WITH BELVEDERES –
MIDDLE OF PLAZA
AUGUST 2017 UPDATED MODEL – HIGH TIDE ≈ 6.0'



VIEW 6 – EXISTING – MIDDLE OF PLAZA
HIGH TIDE ≈ 6.0'



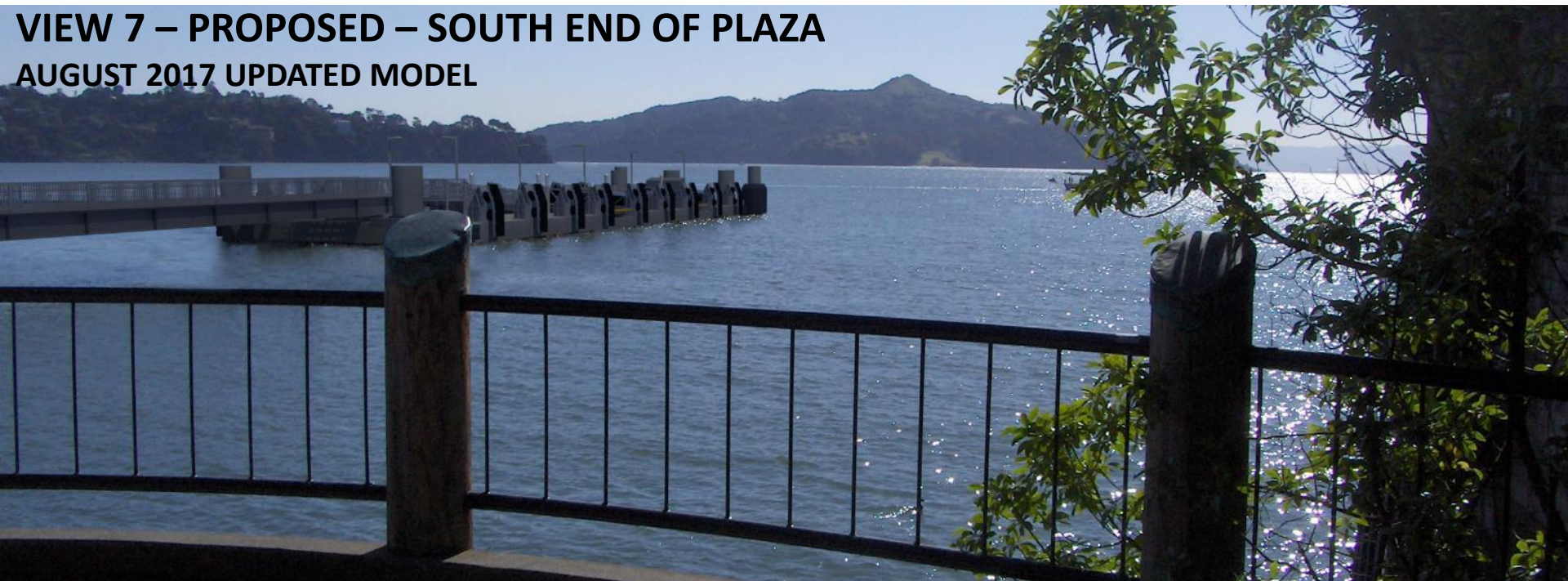
VIEW 6 – PROPOSED – WITHOUT BELVEDERES –
MIDDLE OF PLAZA
AUGUST 2017 UPDATED MODEL – HIGH TIDE ≈ 6.0'



VIEW 7 – EXISTING – SOUTH END OF PLAZA



VIEW 7 – PROPOSED – SOUTH END OF PLAZA
AUGUST 2017 UPDATED MODEL



VIEW 8 – EXISTING – FROM BRIDGEWAY

HIGH TIDE ≈ 6.0'



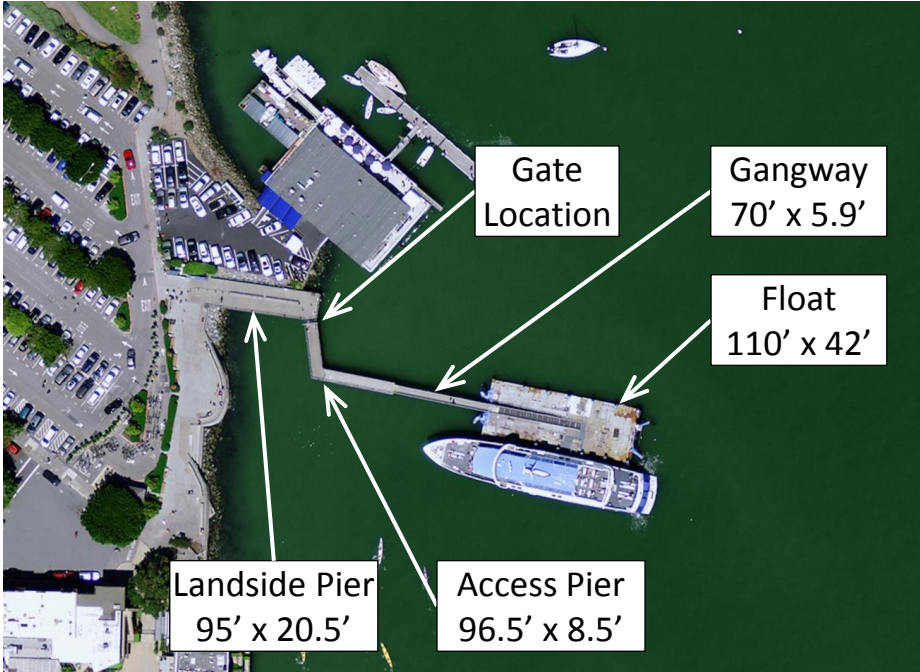
VIEW 8 – PROPOSED – FROM BRIDGEWAY

AUGUST 2017 UPDATED MODEL – HIGH TIDE ≈ 6.0'

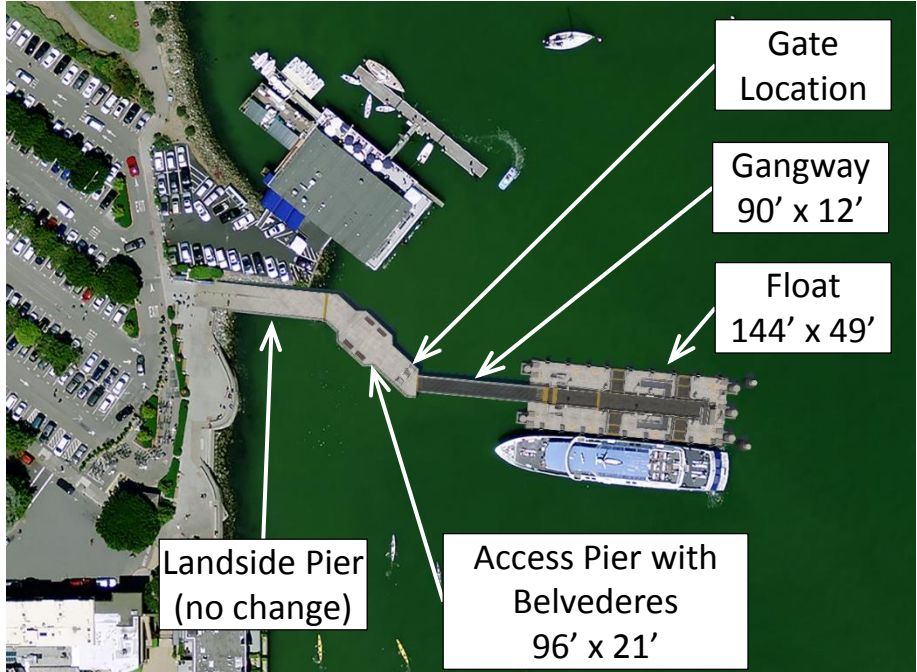


AERIAL VIEW OF SITE

EXISTING

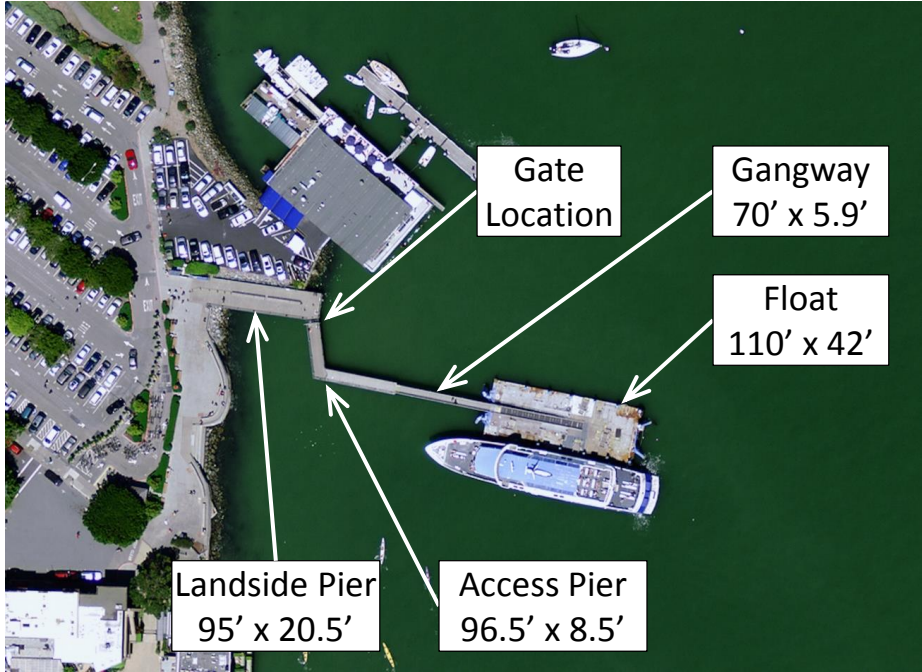


PROPOSED – AUGUST 2017 (ACCESS PIER WITH BELVEDERES)



AERIAL VIEW OF SITE

EXISTING



PROPOSED – AUGUST 2017 (ACCESS PIER WITHOUT BELVEDERES)

